

## Cim 2512

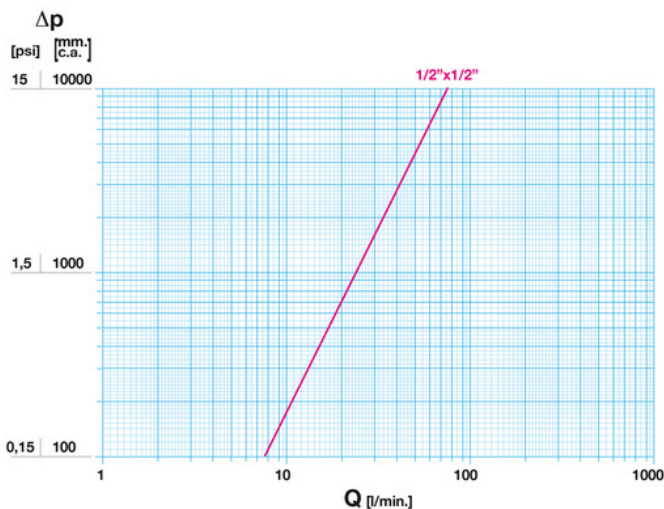
### MAGNETIC SCALE INHIBITOR COUPLING - MALE/MALE



This article was made in compliance with the quality management requirements of standard ISO 9001:2008. All articles are tested according to the standard EN 12266-1:2003. It can be used in drinking water distribution networks and sanitary systems to reduce the effects of limestone. It is made of a brass alloy that complies with standard EN 12165-CW617N-M.

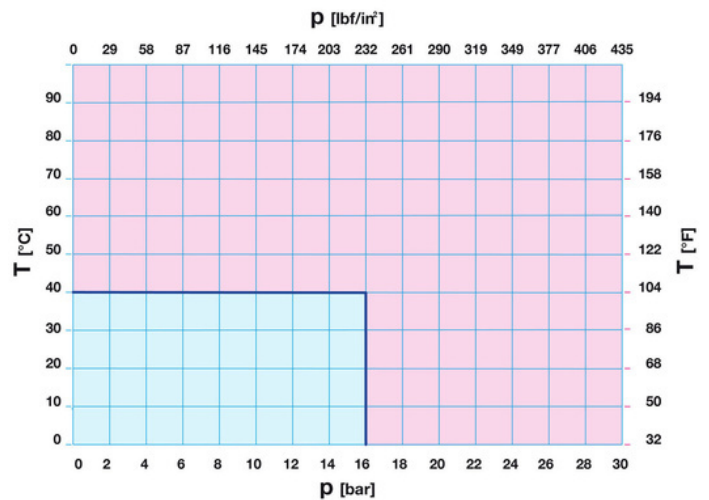
Nominal Pressure: PN16  
Operating temperature: 0 ÷ 40°C

### FLOW AND PRESSURE DROP



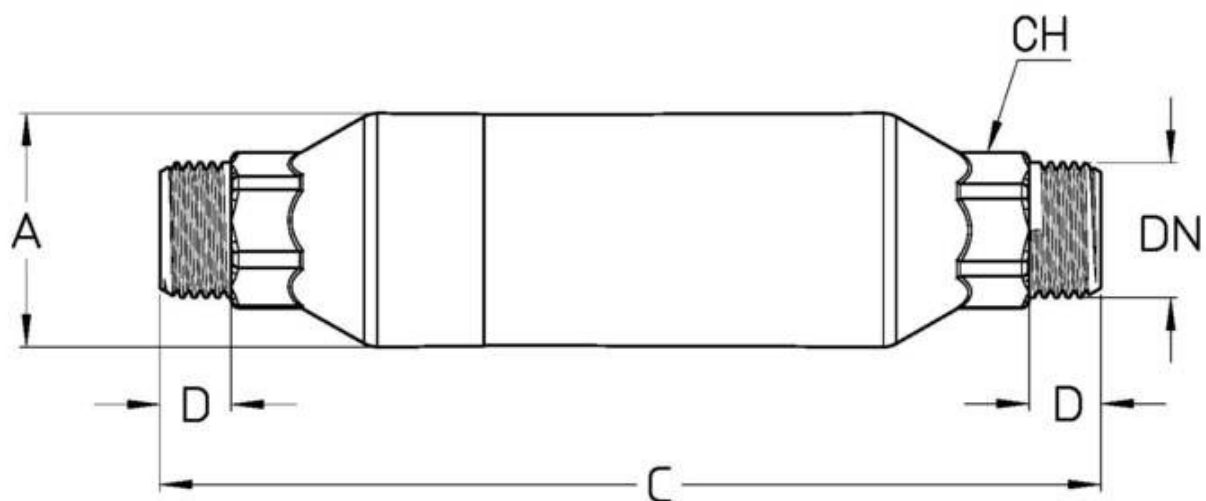
Notes:  
1 l/min = 0,06 m3/h  
1 m3/h = 16,67 l/min  
1 bar = 10.000 mm w.c.  
1 psi = 690 mm w.c.

### PRESSURE TEMPERATURE RATINGS



Notes:  
1 bar = 14,5 psi  
1 bar = 14,5 lbf/in2  
°C = 5/9 x (°F-32)  
°F = 32 + (9/5 x °C)

## TECHNICAL DRAWING



DN	1/2"
<b>Grms.</b>	<b>410</b>
A	36
C	145
D	13
CH	22

Thread:  
ISO 228

## TECHNICAL CHARACTERISTICS

<b>KV</b>	
Ø T.R	15
KV	4,6

KV = Flow rate in m<sup>3</sup>/h with a pressure drop of 1 bar

## OUR CERTIFICATIONS

**EAC**